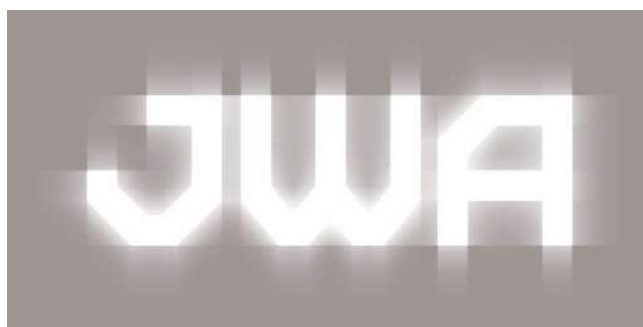
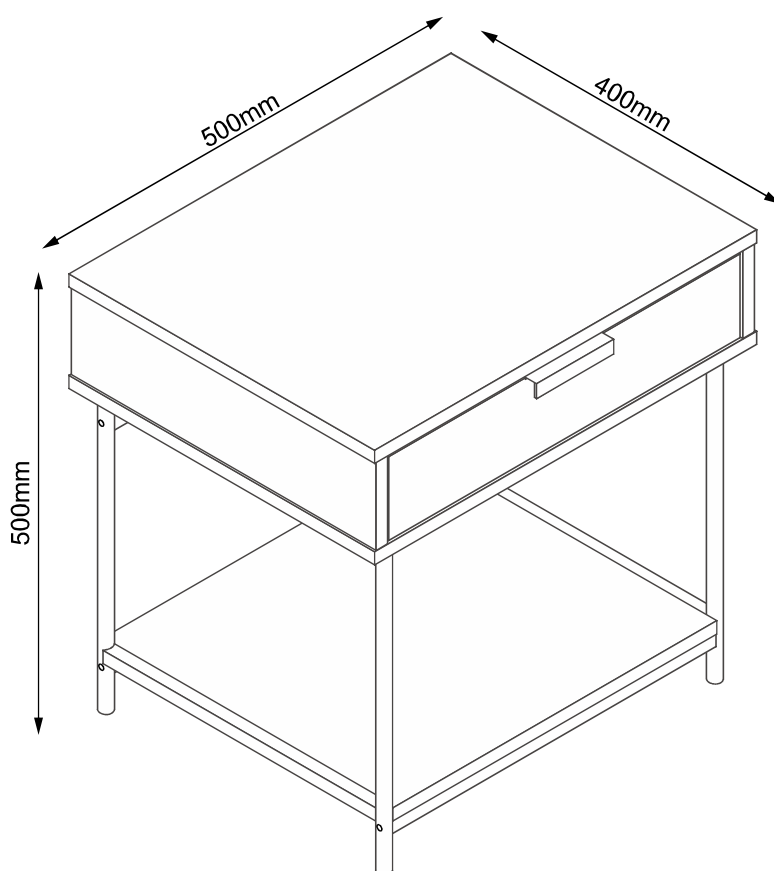


ASSEMBLY INSTRUCTION

HESTER

Bedside Table

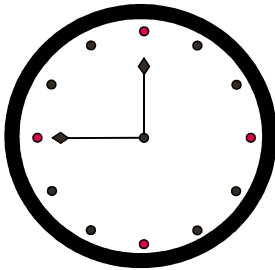
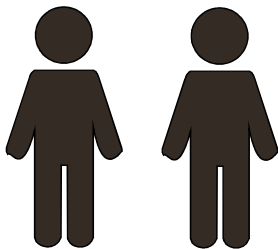
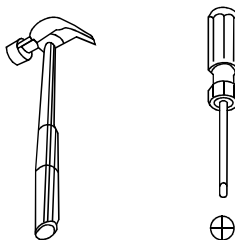
HESTER 81304 81305 81306



PRE-ASSEMBLY PREPARATION

Before you start:

1. Choose a clean, level, spacious assembly area. Avoid hard surfaces that may damage the product
2. Take care when lifting. Product should be assembled as near as possible to the point of use
3. Ensure that you have all required contents for complete assembly
4. Always read the assembly instructions carefully before beginning assembly.
5. Keep all hardware parts and packaging out of reach of small children.
6. Do not over tighten the screws and bolts as this may damage the threads

		
Allow 45 min	For 2 person	Additional tools required



WARNING

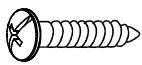
		<p>Children have died from furniture tipover.</p> <ul style="list-style-type: none"> • ALWAYS secure it with an anchor device. • NEVER allow children to stand, climb or hang on drawers, doors, or shelves. • NEVER open more than one drawer at a time. • Place heavy items down low <p>NEVER put a TV on this furniture </p> <p style="color: red; font-size: small;">This is a permanent label. Do not remove!</p>
---	---	--

SAFETY BRACKETS INSTRUCTIONS

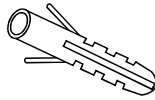
This furniture poses a tipping risk and as such must be secured to a wall using the provided tipping kit.

1. Attach one Mounting Plate to the wall with the Large Screws. Make sure to attach the Mounting Plate into a stud. If mounting into brick or masonry you will need to acquire wall anchors. Please enquire with your local hardware supplier for appropriate fixings.
2. Attach the second Mounting Plate to the furniture frame with the Short Screws.
3. Move the furniture to its final position. Thread a Wall Strap through the both Mounting Plates and tighten until snug. Do not over tighten.
4. Make sure that the Mounting Plates are firmly attached to the wall and furniture and that the Wall Strap is snug.

HARDWARE



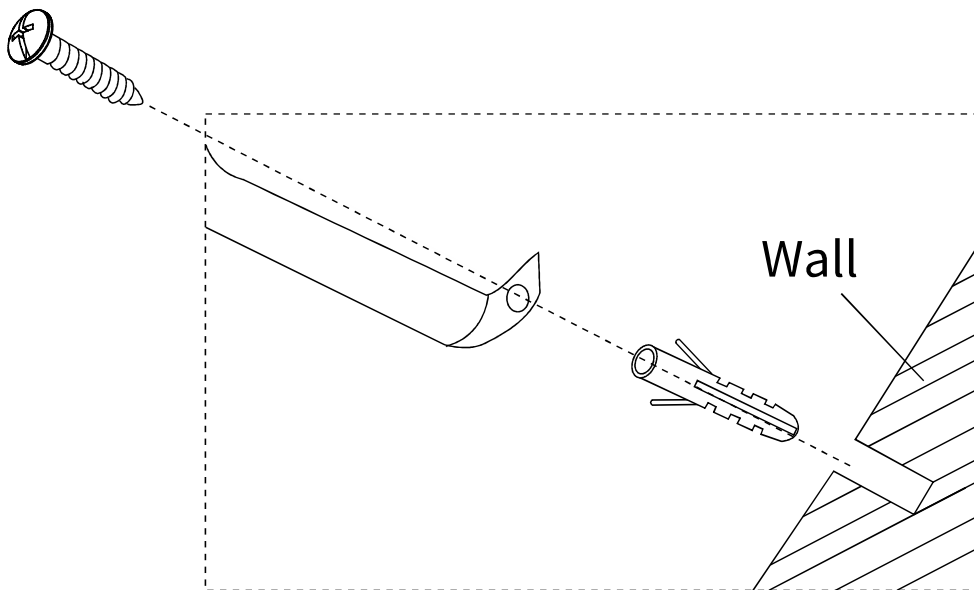
2pcs



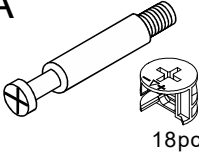

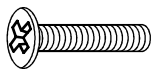
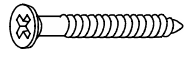
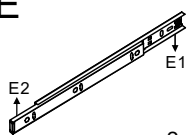


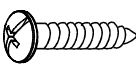
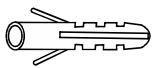
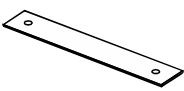

2pcs



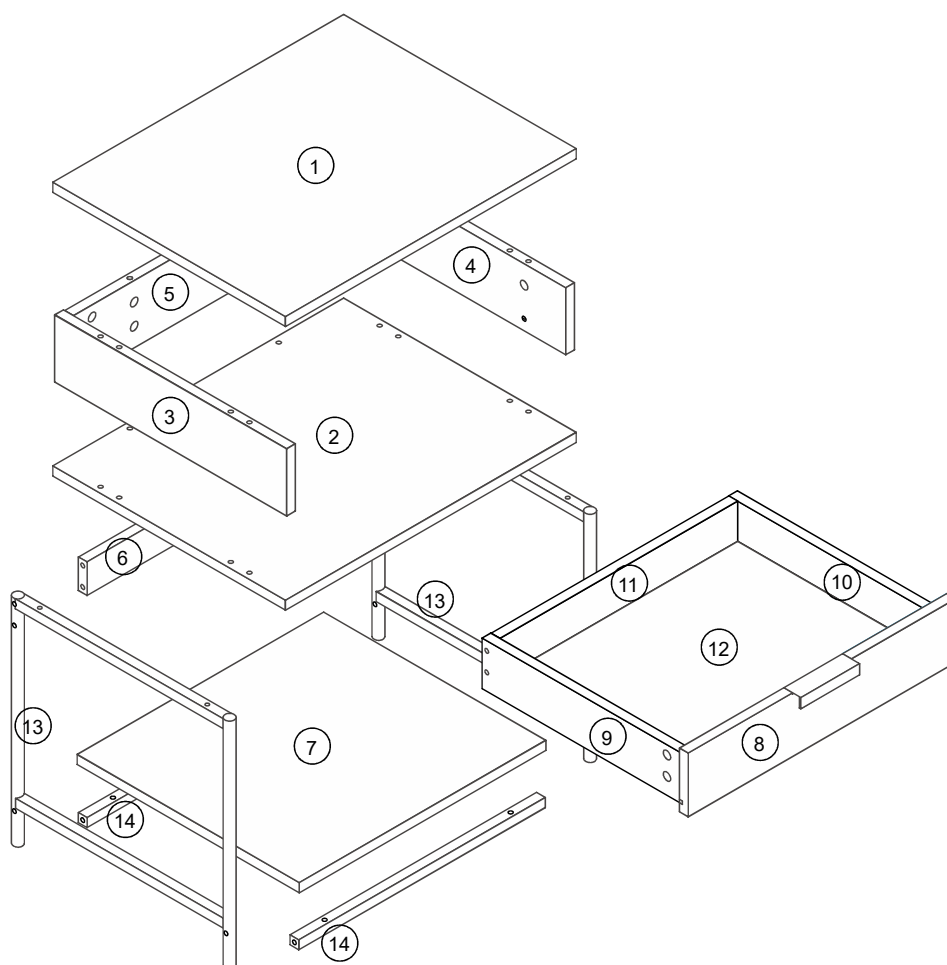
2pcs



PARTS LIST

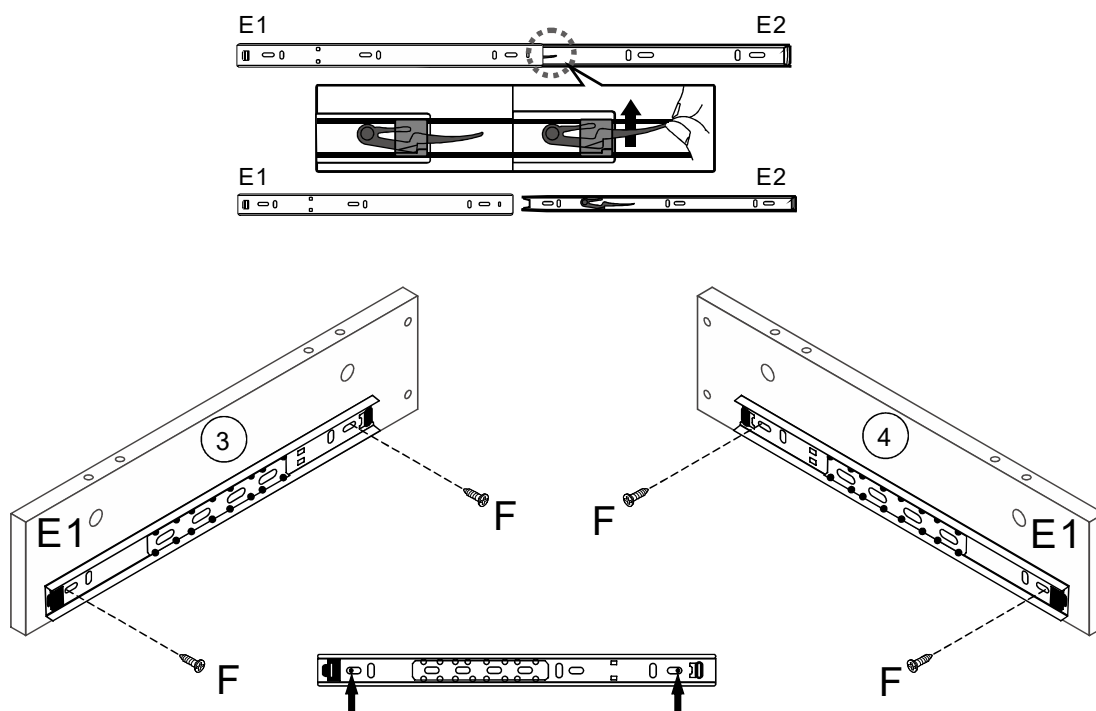
A  18pcs	B  8X30mm 8pcs	C  M6X25mm 12pcs	D  ST5X50mm 12pcs	E  E2 E1 2pcs
F  ST3.5X12mm 12pcs	G  1pc	H  ST4X25mm 2pcs	I  2pcs	J  2pcs
K  18pcs				

1	Cabinet top panel
2	Cabinet bottom panel
3	Cabinet left side panel
4	Cabinet right side panel
5	Cabinet back panel
6	Upper connecting panel
7	Lower shelf panel
8	Drawer front panel
9	Drawer left side panel
10	Drawer right side panel
11	Drawer back panel
12	Drawer bottom panel
13	Main frame
14	Connecting tube



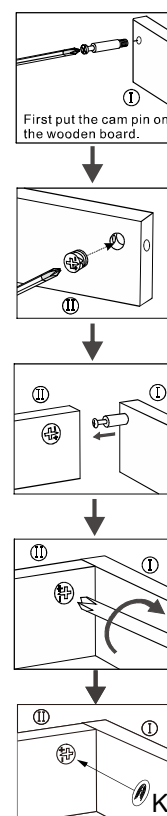
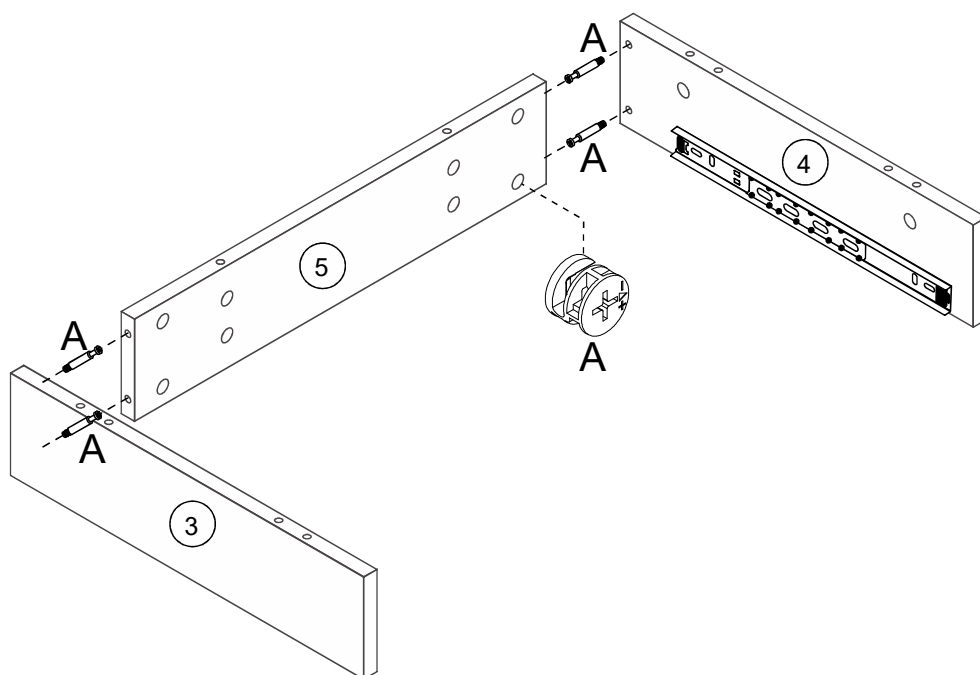
STEP 1:

1. Attach E1 to panel 3 with part F, Attach E1 to panel 4 with part F.



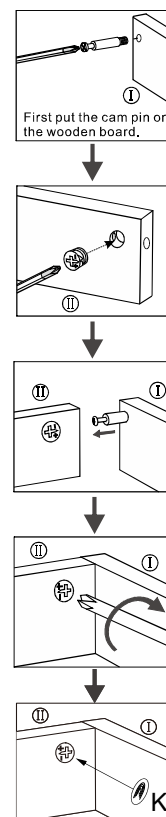
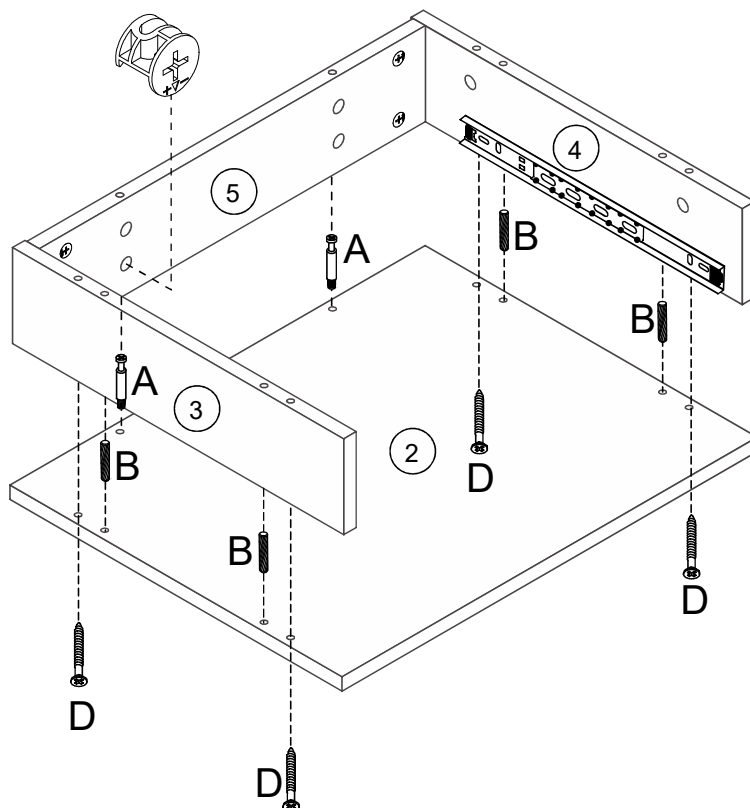
STEP 2:

1. Attach panel 3, 4, 5 with part A.



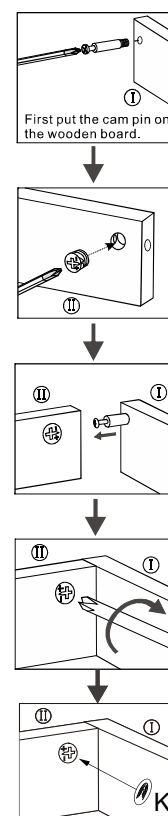
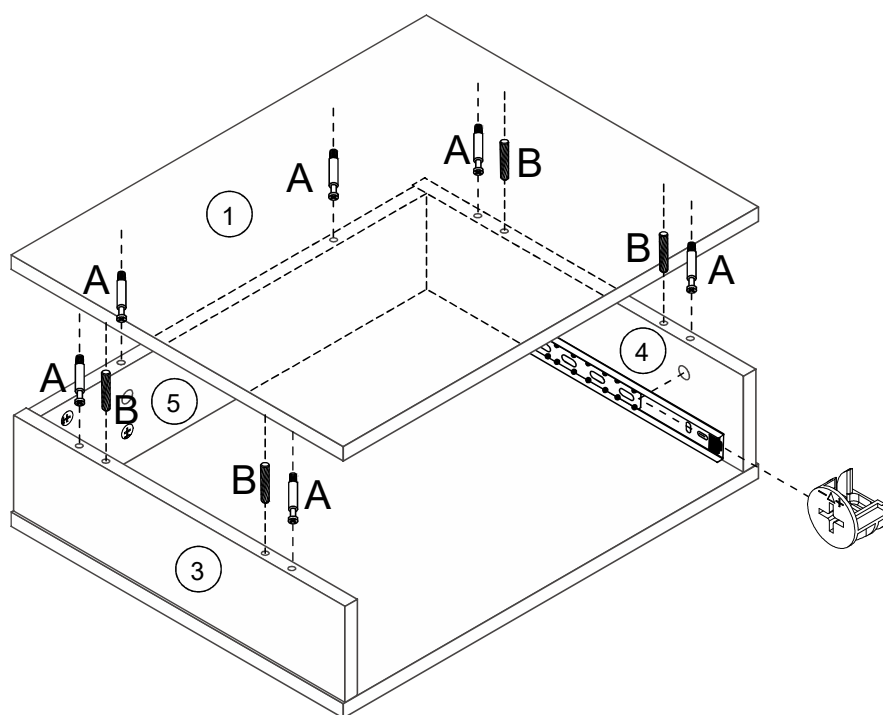
STEP 3:

1. Attach panel 2 to panel 5 with part A. Attach panel 2, 3, 4 with parts B and D.



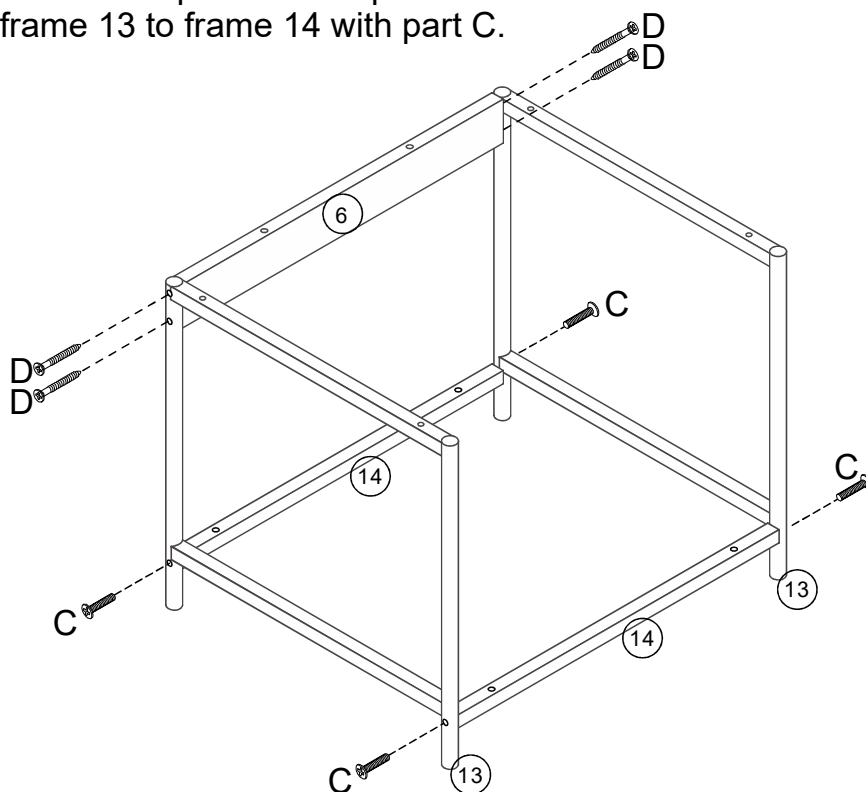
STEP 4:

1. Attach panel 1, 3, 4, 5 together with parts A and B.



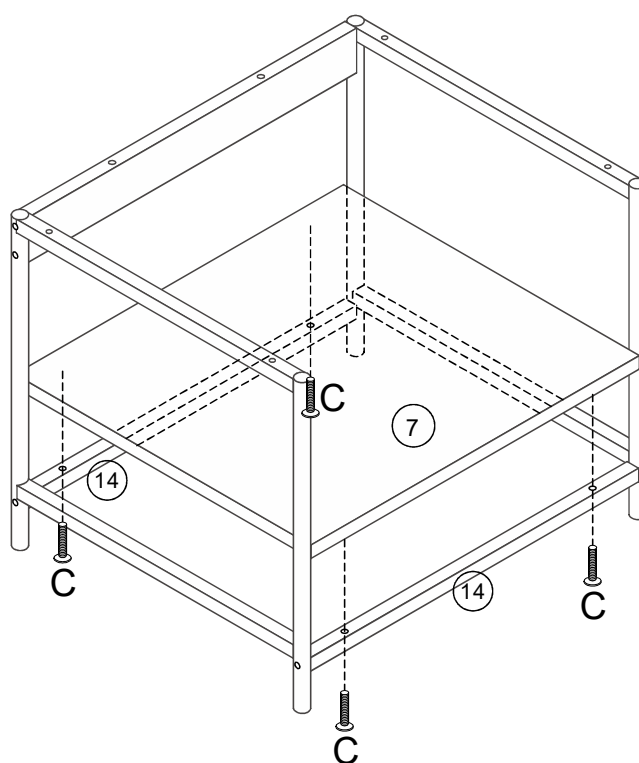
STEP 5:

1. Attach frame 13 to panel 6 with part D.
2. Attach frame 13 to frame 14 with part C.



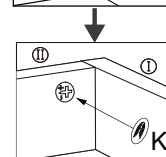
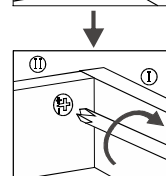
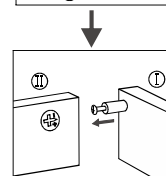
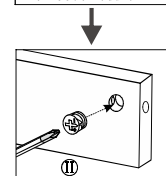
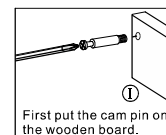
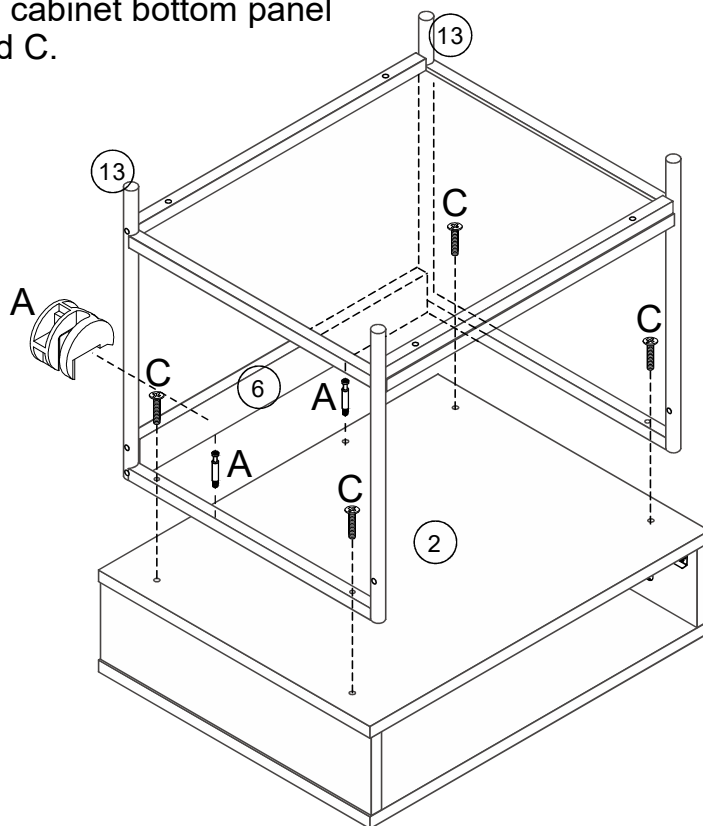
STEP 6:

1. Attach panel 7 to connecting tube 14 with part C.



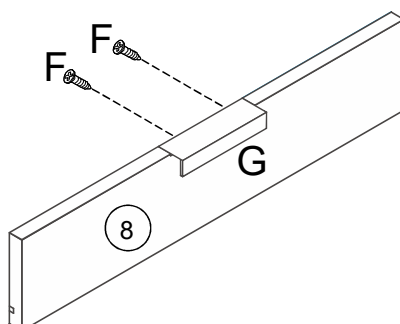
STEP 7:

1. Attach upper connecting panel 6 and frame 13 to cabinet bottom panel 2 with part A and C.



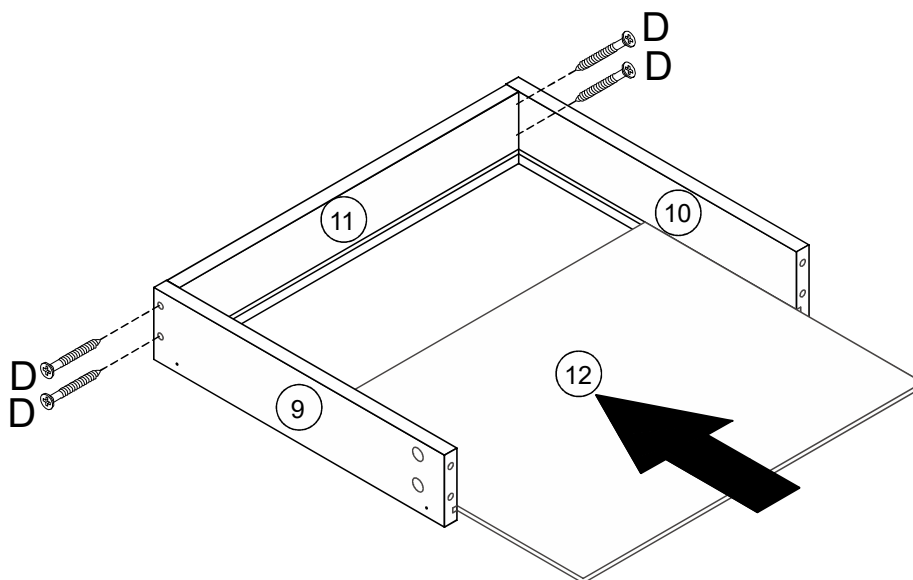
STEP 8:

1. Attach handle G to panel 8 with part F.



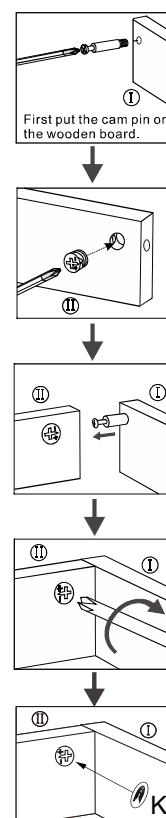
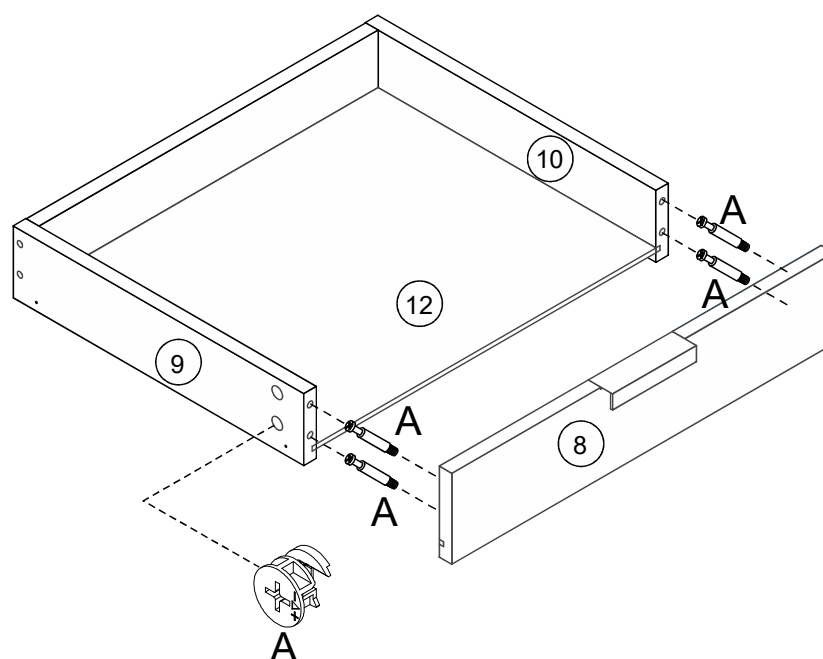
STEP 9:

1. Attach panels 9, 10, 11 together with part D, and insert bottom panel 12 as the instruction showing.



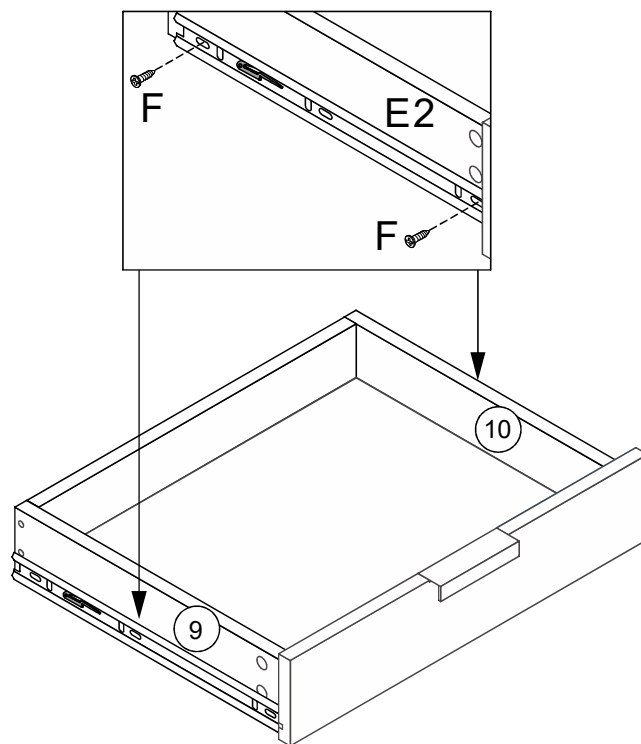
STEP 10:

1. Attach panel 8, 9, 10 together with part A.



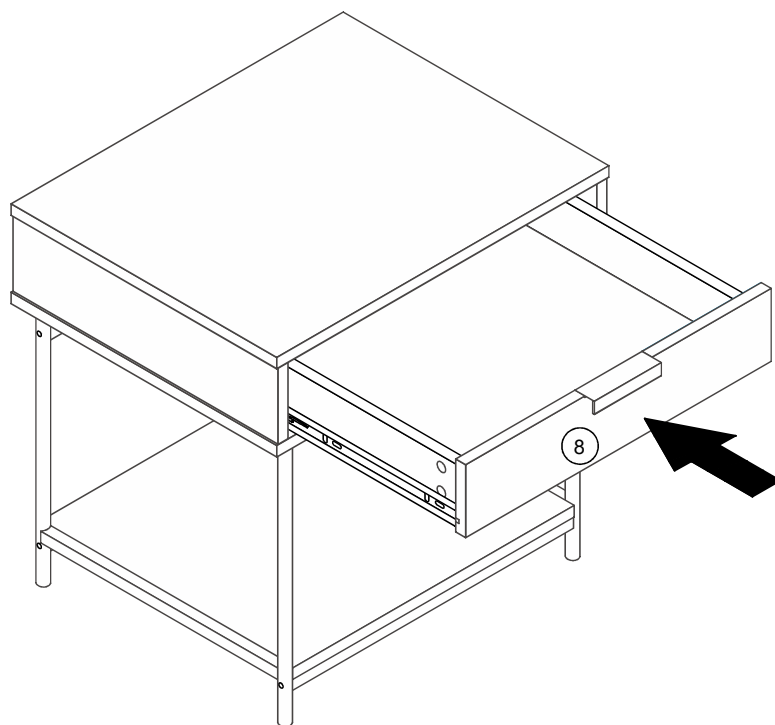
STEP 11:

1. Attach E2 to panel 9 with part F. Attach E2 to panel 10 with part F.



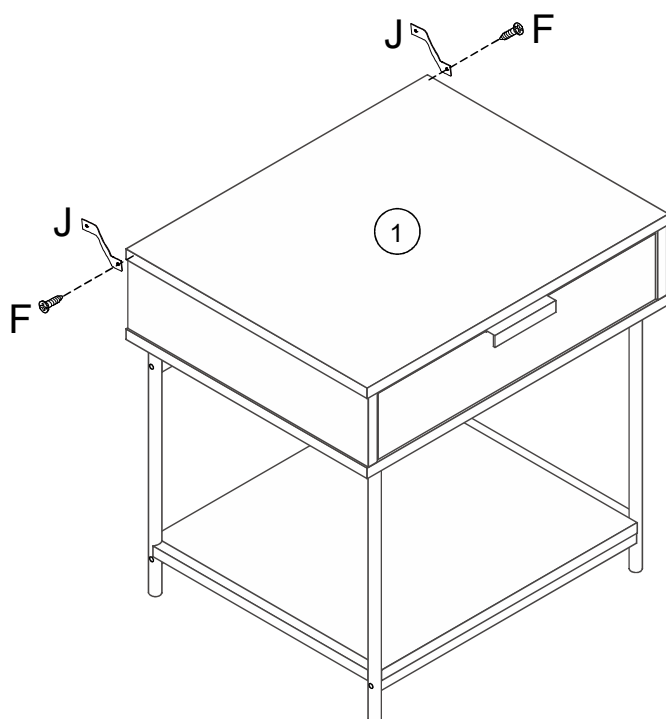
STEP 12:

1. Insert the drawer as the instruction showing.



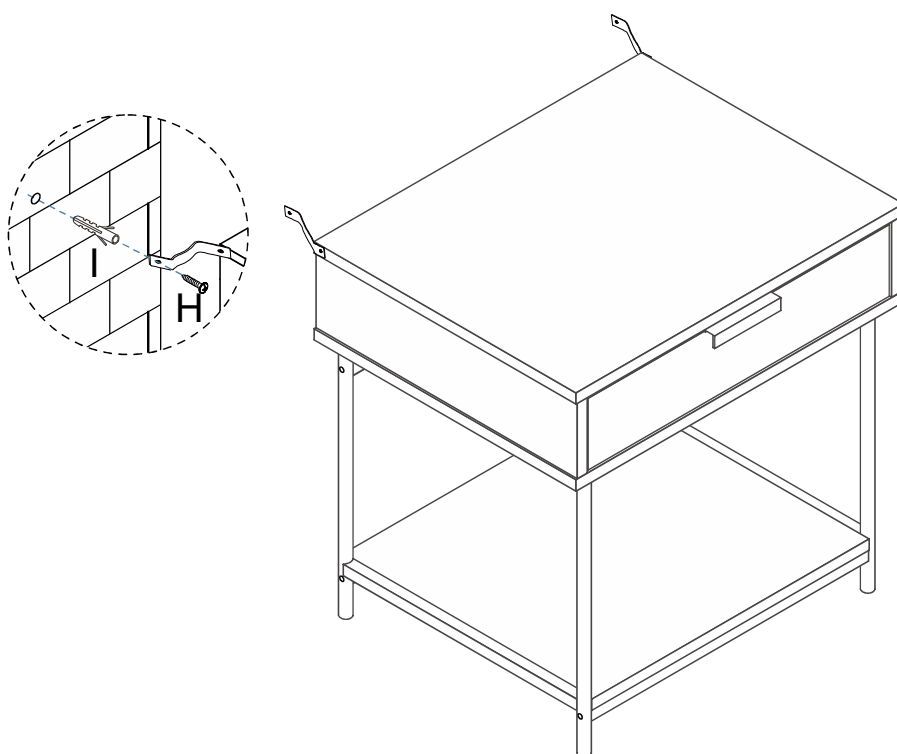
STEP 13:

1. Attach J to cabinet top panel with part F.



STEP 14:

1. Attach I to the wall with part H.



STEP 15:

Assembly
complete!



To protect your furniture, we suggest the following:

- Avoid placing your furniture in direct sunlight.
- Do not place furniture directly under windows.
- Do not place sharp materials (knife, fork, etc.) directly onto your furniture as sharp material may scrape and damage the finish.
- Do not place material with high temperature directly onto the surface of your furniture.
- Clean up spills quickly. Water left over a prolonged period of time may cause damage. Alcohol, perfume, nail polishes, aftershave and some medication may cause severe finish damage if not cleaned immediately.
- Use a clean, soft, dry, lint free absorbent cloth to clean your furniture. Do not use any detergent as they may contain ingredients that may react and damage the finish.

NOTE: If the above care advise is not adhered to your product warranty may become void